

# Frank's Sign

## In Brief

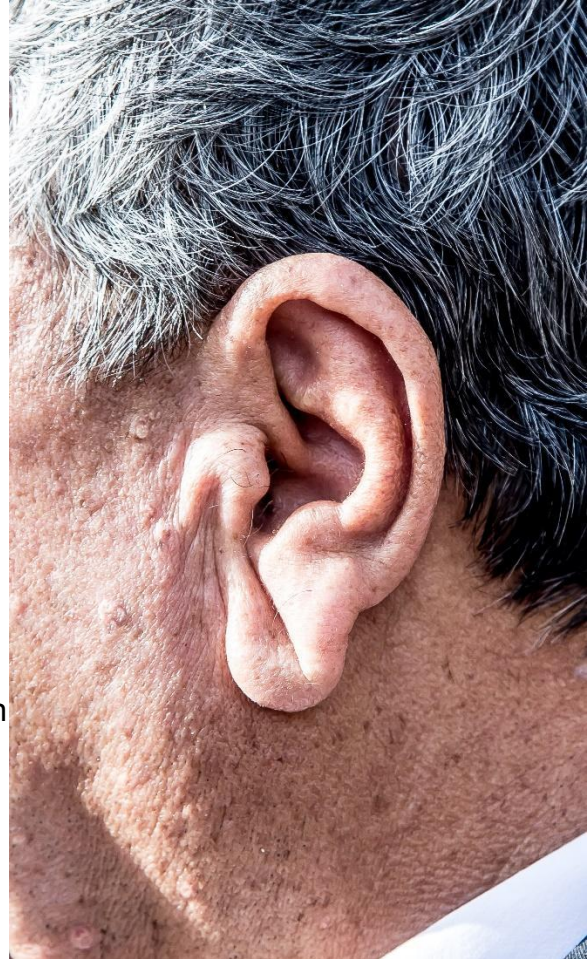
### Earlobe Crease

by Richard Strongwater, MD

Frank's sign is defined as a deep wrinkle or crease (usually single or double on the same earlobe) that extends diagonally from the tragus toward the posterior border of the earlobe.

It may occur unilaterally or bilaterally. Earlobe crease (ELC) sign has been associated with an increased risk for coronary artery disease (CAD). The prevalence of ELC increases with age and in patients with CAD. ELC and CAD may be associated with the loss of elastin and elastic fiber in skin and arteries. Many studies support the association of CAD with ELC.

Presence of a persistent earlobe crease should prompt careful assessment of the patient's risk factors for heart disease and stroke.



### References

Kirkham N, Murrells T, Melcher DH, Morrison EA. Diagonal earlobe creases and fatal cardiovascular disease: a necropsy study. *Brit Heart J*. 1989;61:361–364.

Gulsin GS, Clement KD, Anglim N. Frank's sign as a marker of coronary artery atherosclerosis. *J Cardiol Clin Res*. 2014;2:1032.